

# Full Read, Write, ROAR!

## Activity Guide Packet

### Kindergarten





# LEARNER GUIDE – Kindergarten

Episode: 315

## Read It

### Pat-a-Cake

Pat-a-cake, pat-a-cake  
baker's man.

Bake me a cake  
as fast as you can.

Pat it and prick it and  
mark it with "B."

Put it in the oven  
for baby and me.

## High-Frequency Words

it in

Circle the high-frequency words  
in the nursery rhyme.

## Write It

- Rhyming words have ending sounds that are the same like **man** and **can**. These words are in the **-an** family.
- Underline the rhyming words man and can in the nursery rhyme.
- Can you think of some more words that rhyme with **man** and **can**?

## Connections

A **bakery** is a place where bread, cakes, cookies, and other baked foods are made and sold. A **baker** is the person who makes and sells bread, cakes, and cookies.

- Here is a virtual field trip to a [bakery](https://dptv.pbslearningmedia.org/resource/10d47943-8e2c-43ca-a521-c700a4ef2bd8/baking-and-measurements/).  
<https://dptv.pbslearningmedia.org/resource/10d47943-8e2c-43ca-a521-c700a4ef2bd8/baking-and-measurements/>



# LEARNER GUIDE – Kindergarten

Episode: 316

## Read It

Words are made up of syllables. A **syllable** is a part of a word with a vowel sound.

Clap out the number of syllables in our **Words To Know**. Then read the word in a sentence.

### cower



The spider made me **cower**.

### abandoned



I saw an **abandoned** toy on my walk.

### discarded



My mom **discarded** some of my old toys.

## Words To Know

- **cower** - to move back or look down because you are afraid.
- **abandoned** - to leave something or someone alone.
- **discarded** - to throw something away because it is unwanted.

## Write It

- When we write a sentence we need to plan out our writing.
- We think about what we want to write and then say it out loud.
- On a scrap piece of paper, write "I can be kind."

## Try It

Draw a picture of how you can show kindness.



# LEARNER GUIDE

Kindergarten - Episode 317

K

## Read It

### Jack and Jill

Jack and Jill  
Went up the hill  
To fetch a pail of water.

Jack fell down,  
And broke his crown,  
And Jill came tumbling  
after.

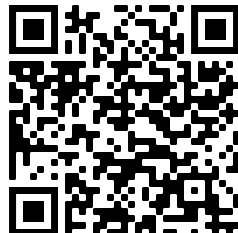
## Words to Know

Underline the words to know in the nursery rhyme.

**fetch** - get a pail of water  
**crown** - his head

## Connections

Ask an adult to scan the QR code to learn how to make your own water well.



## High Frequency Words

Circle the high-frequency words in the nursery rhyme.

and up

## Write It

- Rhyming words have ending sounds that are the same, like **jill** and **hill**. These words are in the **-ill** family.
- Underline the rhyming words **jill** and **hill** in the nursery rhyme.
- Can you think of some more words that rhyme with **jill** and **hill**?



# LEARNER GUIDE

Kindergarten - Episode 318

K

## Read It

Words are made up of syllables. A **syllable** is a part of a word with a vowel sound.

Clap out the number of syllables in our **Words To Know**. Then read the word in a sentence.

### Mirroring



When I looked down into the pond, the water was **mirroring** the image of my face.

### Babble



The **babble** of the stream was so relaxing.

### Defeated



I felt really **defeated** when I couldn't ride my bike without the training wheels.

## Try It

Scan the QR code learn more about the benefits of reading out loud.



## Words to Know

**mirroring** - to show the image of something

**babble** - a quiet sound made by flowing water

**defeated** - feeling unsuccessful at something you are trying to do

## Key Words

- When we write a sentence, we need to plan out our writing.
- We think about what we want to write and then say it out loud.
- Today we are going to write "I can do hard things."

---

---

- Draw a picture of something that you did that was hard.



# LEARNER GUIDE

Kindergarten - Episode 401

K

## Read It

### Humpty Dumpty

Humpty Dumpty

Sat on a wall.

Humpty Dumpty

Had a great fall.

All the king's horses  
And all the king's men,  
Couldn't put Humpty  
Together again.

## Draw It

On the back of this sheet or on a scrap piece of paper, draw a picture of the problem in the nursery rhyme.

## High Frequency Words

Circle the high-frequency words in the nursery rhyme.

**All**      **The**

## Words to Know

Underline the words to know in the nursery rhyme.

**Character** - who the story is about

**Problem** - part that goes wrong

## Write It

Rhyming words have ending sounds that are the same, like **wall** and **fall**. These words are in the **-all** family.

Underline the rhyming words **wall** and **fall** in the nursery rhyme.

Can you think of some more words that rhyme with **wall** and **fall**?



# LEARNER GUIDE

Kindergarten - Episode 402

K

## Read It

Read the sentences out loud.  
Underline the **Words to Know** from the word box in each sentence.

My grandma's head was nodding when she was sleeping in her rocking chair.

I saw a snake slither through the grass.

Plants can tumble on a breeze.

## Draw It

On the back of this sheet or on a scrap piece of paper, draw a picture to match the sentence:

Plants need sun, water, and room to grow

## Phonics Skill

**verb** - action words that tell something is happening.

Some verbs end in **-ing** like in the words swaying**ing**, drifting**ing** and floating**ing**.

## Words to Know

**slither** - to move by sliding your entire body back and forth like a snake

**nodding** - to bend downward or forward like when you nod your head

**tumble** - to fall forward while turning over



# LEARNER GUIDE

Kindergarten - Episode 403

K

## Read It

### Mary Had A Little Lamb

Mary had a little lamb,  
whose fleece was white as  
snow. And everywhere that  
Mary went, the lamb was  
sure to go.

It followed her to school one  
day which was against the  
rules. It made the children  
laugh and play  
to see a lamb at school.

## Try It

Use the rhyming clues to solve the  
riddle. Then pretend to be that  
animal!

What animal rhymes with funny and  
has two long ears? bunny

What animal rhymes with herd and  
has two wings? bird

What animal rhymes with make, has  
scales, and no legs? snake

## High Frequency Words

Circle the high-frequency  
words in the nursery  
rhyme.

**Was**      **Her**

## Words to Know

Underline the words to  
know in the nursery  
rhyme.

**fleece** - the hair or wool  
covering a sheep or  
lamb

## Write It

Rhyming words have ending  
sounds that are the same.  
Some words can sound the  
same at the end but they aren't  
spelled the same.

Underline the rhyming words  
**snow** and **go** in the nursery  
rhyme.

Can you think of some more  
words that rhyme with **snow**  
and **go**?





# LEARNER GUIDE

Kindergarten - Episode 404

K

## Read It

Words are made up of syllables. A **syllable** is a part of a word with a vowel sound.

Clap out the number of syllables in our **Words To Know**. Then read the word in a sentence.

### damp



This sponge is damp.

### rotting



This banana is not fresh, it is rotting.

### burrow



The baby rabbits live in an underground burrow.

## High Frequency Words

**damp** - a little wet  
**rotting** - getting old and breaking down  
**burrow** - a hole or a tunnel dug by a small animal

## Words to Know

When we write a sentence we need to plan out our writing.

We think about what we want to write and then say it out loud.

On a scrap piece of paper, write "Worms can help plants grow."

## Try It

Draw a picture of a worm in a garden



# LEARNER GUIDE

Kindergarten - Episode 405

K

## Read It

### This Little Piggy

This little piggy went to  
market.

This little piggy stayed home.

This little piggy had roast  
beef.

This little piggy had none.

And this little piggy cried

Wee wee wee

All the way home.

## Phonics Skills

**diagraph** - 2 letters that are put  
together to make a new sound

soft **th** sound - like thin

hard **th** sound - like this

## Draw It

On the back of this sheet or on  
a scrap piece of paper, draw a  
picture to go with the sentence:  
The pig was sad

## High Frequency Words

Circle the high-frequency  
words in the nursery  
rhyme.

**this**

**had**

## Write It

Rhyming words have  
ending sounds that are the  
same. Some words can  
sound the same at the end  
but they aren't spelled the  
same.

Write a rhyming word that  
follows the pattern.

None	Fun

Bread	Red



# LEARNER GUIDE

Kindergarten - Episode 406

K

## Sort It

Read the words in the text box.  
Write the words under which  
habitat they are found.

dry cactus wet  
iguana tree

Forest	Desert

## Draw It

On the back of this page or on a  
scrap piece of paper, draw a picture  
for each sentence.

A squirrel lives in a tree in the forest.

A cactus is a plant that grows in the  
desert.

## Words to Know

**habitat** - a place in nature  
where animals live

**forest** - an area with many  
trees.

**desert** - a dry area that  
does not get much rain

## Write It

What animals live in your  
community?

What things do they need?



# LEARNER GUIDE

Kindergarten - Episode 407

K

## Read It

### The Bear Went Over the Mountain

The bear went over the mountain,  
To see what she could see.  
And all that she could see,  
Was the other side of the mountain.  
The other side of the mountain,  
Was all that she could see.

## Phonics Skills

**diagraph** - 2 letters that are put together to make a new sound  
The **wh** sound in when, whale, whiz, whine, whip

## Draw It

On the back of this sheet or on a scrap piece of paper, draw a picture to go with the sentence:  
What did the bear see?

## High Frequency Words

Circle the high-frequency words in the nursery rhyme.

**over**

**see**

## Write It

Rhyming words have ending sounds that are the same. Some words can sound the same at the end but they aren't spelled the same.

Write a rhyming word that follows the pattern.

See	Sea



# LEARNER GUIDE

Kindergarten - Episode 408

K

## Read It

Clap out the number of syllables in our **Words To Know**. Then read the word in a sentence.

**hoof**



The horse has mud on his hoof.

**meadow**



The baby fox lives in a den in the meadow.

**Wading**



I love to wear my rain boots and go wading in the puddles.

## Words to Know

**hoof** - hard covering over an animal's toes

**meadow** - a flat grassy area

**wading** - to walk through water

**habitat** - a place in nature where an animal lives

## Write It

On the back of this page or on a scrap piece of paper, draw a picture for each sentence.

A squirrel lives in a tree in the forest.

A cactus is a plant that grows in the desert.

## Draw It

Draw a line from the animal to its habitat





# LEARNER GUIDE

Kindergarten - Episode 409

K

## Read It

### Little Boy Blue

Little boy blue,  
Come blow your horn,  
The sheep's in the meadow,  
The cow's in the corn.  
But where is the boy  
Who looks after the sheep?  
He's under a haystack,  
Fast asleep

## Write It

**Rhyming words** have ending sounds that are the same. Some words can sound the same at the end but they aren't spelled the same. Underline the rhyming words in the nursery rhyme.

## High Frequency Words

Circle the high-frequency words in the nursery rhyme.

**come      who**

## Write It

Answer the following questions about the nursery rhyme.

Who is the main character?

Where are the sheep?

What is the boy doing?



# LEARNER GUIDE

Kindergarten - Episode 410

K

## Sort It

Draw a line from the animal to where it lives at a pond.

over



tadpole



blackbird



goldfinch



bullfrog

under

## Phonics Skills

**Compound words** are two small words put together to form a new word. The new word has its own meaning.

first word		second word	compound word
bull	+	frog	bullfrog
black	+	bird	blackbird
gold	+	finch	goldfinch
tad	+	pole	tadpole



# LEARNER GUIDE

Kindergarten - Episode 411

K

## Read It

### Once I Saw a Little Bird

Once I saw a little bird  
Come hop, hop, hop;  
So I cried, "Little bird,  
Will you stop, stop, stop?"  
And was going to the window  
To say, "How do you do?"  
But he shook his little tail,  
And far away he flew.

## Write It

The words hop and stop are part of the op word family. What other words rhyme with hop and stop?

---

---

---

## High Frequency Words

Circle the high-frequency words in the nursery rhyme (The word go is part of a new word).

**you go**

## Phonics Skills

**Rhyming words** have ending sounds that are the same. Some words can sound the same at the end but they aren't spelled the same. Underline the rhyming words in the nursery rhyme.

## Draw It

Draw a picture to go with the sentence.

The bird is looking for worms.





# LEARNER GUIDE

Kindergarten - Episode 412

K

## Sort It

A **living thing** needs air, food, and water to grow. **Non-living things** do not need air, food, and water.

Sort the words into living and non-living things. Write the words under the correct heading.

bird      car      rock      frog      tree      house

living things (Needs air, food, and water to grow)	non-living things

## Draw It

Read the sentence. Fill in the blank with something that you see in your backyard. Draw a picture to match the sentence.

I see a \_\_\_\_\_ in my backyard.



# LEARNER GUIDE

Kindergarten - Episode 413

K

## Read It

### Little Wind

By Kate Greenaway

Little wind blow on the hill  
top;  
Little wind, blow down the  
plain;  
Little wind, blow up the  
sunshine;  
Little wind, blow off the rain.

## High Frequency Words

Circle the high-frequency words in the nursery rhyme (The word go is part of a new word).

**on down**

## Words to Know

**plain** - a flat area of land with very few trees

## Phonics Skills

**Rhyming words** have ending sounds that are the same. Some words can sound the same at the end but they aren't spelled the same.

Underline the rhyming words in the nursery rhyme.

## Words to Know

Draw a picture to go with one of the sentences above.

Little wind, blow \_\_\_\_\_



# LEARNER GUIDE

Kindergarten - Episode 414

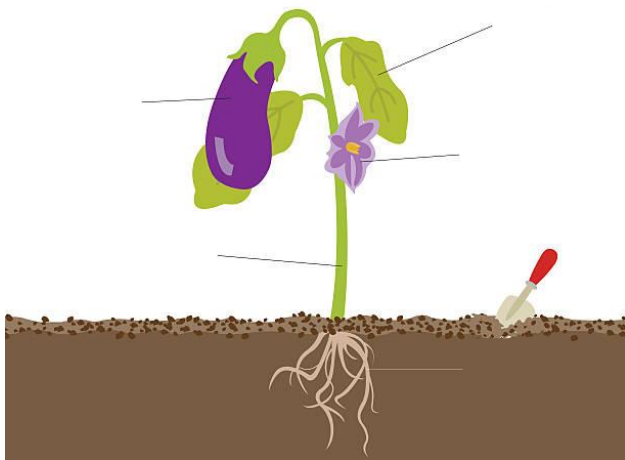
K

## Write It

Label the parts of the plant.

fruit stem flower roots  
leaf

### Parts of a Plant



## Words to Know

**life cycle** - The life cycle of a plant is how it changes from a seed to a grown plant

**roots** - the part of the plant that attaches to the ground and brings water and nourishment to the plant

**leaves** - grow on the stem and produce food for the plant

**stem** - supports the plant

**flowers** - the brightly colored part of the plant that produces seeds

**fruit** - the sweet tasty part of the plant

## Number It

Number the order of events.

- \_\_\_ stem starts to grow above the ground
- \_\_\_ the seed is planted
- \_\_\_ a flower blooms
- \_\_\_ roots grow into the soil
- \_\_\_ leaves grow on the stem



# LEARNER GUIDE

Kindergarten - Episode 415

K

## Read It

### Here is the Beehive

Here is the beehive,  
Where are the bees?  
Hidden away where nobody  
sees.  
Watch and you'll see them  
Come out of the hive.  
One...two...three...four...five!  
Buzz...buzz...buzz...buzz...buzz.

## Draw It

A beehive is where bees live.  
Draw a picture to go with the  
sentence.

The bees flew around the  
beehive.

## High Frequency Words

Circle the high-frequency words in the nursery rhyme

**out are**

## Words to Know

**Rhyming words** have ending sounds that are the same. Some words can sound the same at the end but they aren't spelled the same.

Underline the rhyming words in the nursery rhyme.

**homophones** - words that sound the same but have different meanings

bee



see



be



"Please be on time."

sea





# LEARNER GUIDE

Kindergarten - Episode 416

K

## Label It

Read the words in the box, and decide if the object is found, "Up in the Garden," or, "Down in the Dirt." Write a word on the appropriate line.

ladybug   Honeybee   worm   groundhog   ants   toad

Up in the garden

\_\_\_\_\_



Down in the dirt

\_\_\_\_\_

## Read It

Words are made up of syllables. A **syllable** is a part of a word with a vowel sound. Clap out the number of syllables in the following words. Then read the definition of the word.



**brittle**

dry or easy to break



**drenched**

wet, soaked



**harvest**

to pick or gather crops