



ACTIVITY GUIDE

Episode 103: Words Spelled with -ir, -er, -ur, and -ear

Books: *Where Do I Live?* by Neil Chesanow and *Map My Home* by Jennifer Boothroyd

Scan below to watch lesson



Sort It

Three spelling patterns that make the /er/ sound are ir, er, and ur. Read the words in the word box. Use the chart below to sort and write the words according to their spelling patterns.

purple bird perfect turn person skirt

ir	er	ur

Write It

Write a paragraph about your bedroom. Remember that a paragraph needs to have a beginning, middle, and end. It also includes the following parts:

Paragraph Outline
Introduction
Detail
Detail
Detail
Conclusion

Sentence Starters to help you
My home is...
It has
My home has...



ACTIVITY GUIDE

Episode 104: What's a Neighborhood?
Books: *Where Do I Live?* by Neil Chesanow and *Map My Home* by Jennifer Boothroyd

Scan below to watch lesson



Letter Heroes

Homophones are words that sound the same, but have different spellings and different meanings.

Draw a line from a word on the left to its homophone found on the right.

fair	bare
bear	hare
hair	pear
pair	fare

Write It

- **Human characteristics** of a place are things created by humans, like buildings or roads..
- **Natural characteristics** of a place are things created by nature, like lakes, rivers, oceans or mountains.

Read It

- Circle Mrs. Z's house.
- Draw a fish in the pond.
- Draw a person on a human characteristic of Malik's Neighborhood.
- Put an X on a natural characteristic of Malik's neighborhood.
- Draw a box around the bus stop.



Addition/Subtraction Math Might Challenge

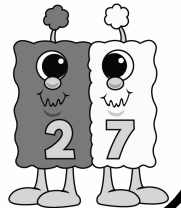
$36 + 38$

decompose/compose



$36 + 38$

partial sums



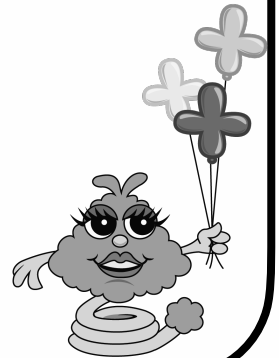
$82 - 39$

decompose/compose



$82 - 39$

counting up and back



Test Your Luck!!

Materials: 1 counter for each player, die, game board, cards (cut out)

Directions:

1. Cut out the cards and mix them up. Place the cards facedown in the center of the game board. Each player puts a counter in the "Start" box.
2. Player 1 rolls the die and moves their counter the number shown on the die. Answer the question you land on. If you answer the question correctly you get 2 points. If you land on a "Test Your Luck" box draw a card and answer the question on the card. If you answer correctly you get the points shown. If you answer incorrectly then you lose your turn.
3. Now the next player rolls the die. Continue taking turns. The first player to get 20 points wins!



$$28 + \underline{\quad} = 75$$

(+ 3 points)

$$14 + \underline{\quad} = 90$$

(+ 3 points)

$$\underline{\quad} - 9 = 85$$

(+ 3 points)

$$73 = 22 + \underline{\quad}$$

(+ 3 points)

$$46 = \underline{\quad} + 38$$

(+ 3 points)

$$36 = \underline{\quad} + 11$$

(+ 3 points)

$$67 + 89 = \underline{\quad}$$

(+ 3 points)

$$\underline{\quad} - 13 = 47$$

(+ 3 points)

$$13 + \underline{\quad} = 50$$

(+ 3 points)



$$82 - \underline{\quad} = 6$$

(+ 3 points)

$$\underline{\quad} - 33 = 9$$

(+ 3 points)

$$17 + \underline{\quad} = 98$$

(+ 3 points)

+5
Points

Go Back to Start

-2
Points

+1
Point

Lose a Turn

Jump ahead 3 spaces

start ↓	$84 - 18 =$	$43 + 15 =$	$72 + 15 =$	$95 - 76 =$	Test Your Luck!	$52 + 37 =$	Test Your Luck!
$28 - 19 =$	<div style="border: 2px dashed black; padding: 20px; display: inline-block;"> <h1>Test Your Luck!</h1> </div>					$44 + 15 =$	
$35 + 26 =$						Test Your Luck!	
Test Your Luck!						$77 - 39 =$	
$63 + 25 =$						$46 + 18 =$	
Test Your Luck!	$82 - 14 =$	Test Your Luck!	$85 - 58 =$	$98 - 79 =$	$75 - 56 =$	$52 + 33 =$	Test Your Luck!