



ACTIVITY GUIDE

Episode 105: Being a Michigan Kid and -ful and -less Suffixes

Book: *I'm a Michigan Kid!* By Gary Bower

Scan below to watch lesson



Read It

A **suffix** is a word part added to the end of a word and changes the meaning of the word.

The suffix **-ful** means “full of”.

The suffix **-less** means “not”.

Read the following passage out loud. Underline words with the suffix -ful and -less.

Lake Huron is a wonderful lake. It has an endless view. The sound of the waves is so peaceful. One thing people love to do when they visit Lake Huron is collect countless Petosky stones and pudding stones. Have you ever seen a pudding stone? They are colorful stones with a mark of red on them. In the summer, make sure to watch out for the dreadful mosquitoes!

Look at the words that you underlined above. Use what you know about the suffixes -ful and -less to determine the meaning of the words.

Reading Strategy

Infer means to arrive at a conclusion based on known facts.

As you read a narrative, see if you can find or **infer** the character’s feelings by what you already know about the character and what the text is telling you.

Fill in the chart below to help you infer how each character is feeling after each action in the story.

Identity (character)	Action	Feelings



ACTIVITY GUIDE

Episode 106: Being a Michigan Kid and a Word Web

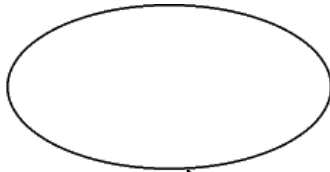
Book: *I'm a Michigan Kid!* By Gary Bower

Scan below to watch lesson

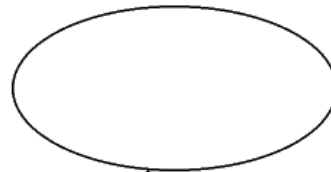


Sort It

Add the suffix **-ing** to the end of the word to make a verb.

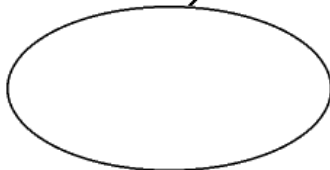


Add the suffix **-ful** to the end of the word to make an adjective.

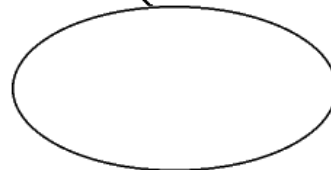


play

Add the prefix **re-** to the beginning of the word to make a verb.



Add the suffixes **-ful** and **-ness** to the end of the word to make a **noun**.



Parts of Speech

verb - a type of word that describes an action

noun - a type of word that represents a person, thing, or place

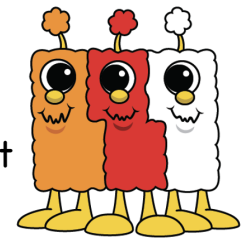
adjective - a type of word that describes nouns and pronouns

Foundational Skills

A **suffix** is a word part added to the end of a word to change a word and its meaning.

A **prefix** is a word part added to the beginning of a word to change a word and its meaning.

Card Sort with Value Pak



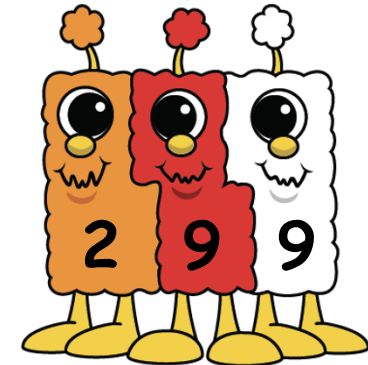
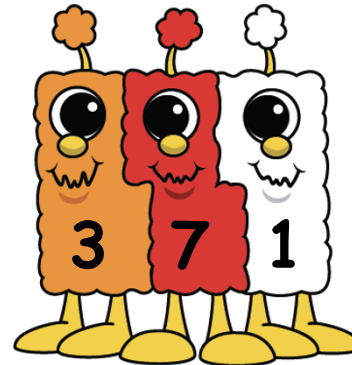
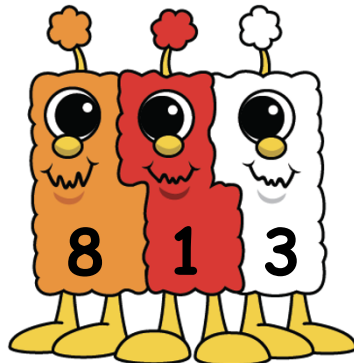
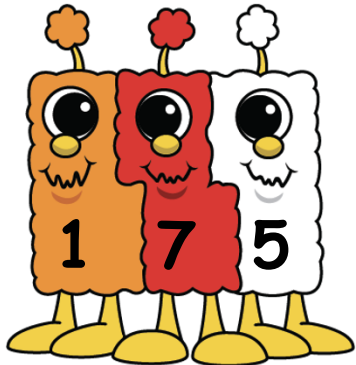
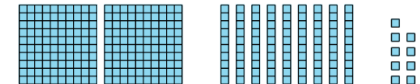
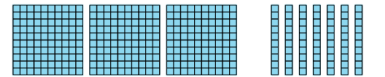
Directions: Cut out all of the cards and mix them up. Find the 3 cards that represent the same number.



100 + 70 + 5 800 + 10 + 3 300 + 70 + 1 two hundred ninety-nine

one hundred seventy-five

eight hundred thirteen



Add and Subtract with the Math Might's

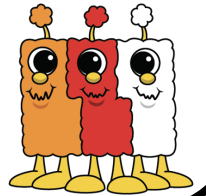
$$99 + 159$$

compensation



$$234 + 132$$

partial sums



$$385 - 182$$

counting up and back

